



**CHRISTOPHER
MODEL 527 SIPHONIC DUAL FLUSH**
TWO-PIECE CLOSED-COUPLED, ELONGATED BOWL,
12" ROUGH-IN, GRAVITY FEED
ELONGATED TOILET WITH SECONDARY DRAIN SYSTEM
VITREOUS CHINA

**HET-WATER SENSE LISTED
ELONGATED TOILET WITH SECONDARY FLUSH SYSTEM
1.1 GALLON/4.1 LITER PARTIAL FLUSH
1.6 GALLON/6.0 LITER FULL FLUSH**

FEATURES:

- Elongated bowl
- Vitreous china
- 12" rough-in
- **Fluidmaster** Siphonic Dual Flush System
Pull lever down for 1.6 gpf; lever up for 1.1 gpf
- **Exclusive Penguin Protection Technology:**
Primary & Secondary overflow drain system protects against overflows
- **Comfort ADA height**
New taller bowl design meets ADA codes
- **1000 gram MaP flushing performance**
With a gravity flushing system
- **Left hand trip lever**
- **Fully glazed 2" trapway**

APPLICABLE CODES & STANDARDS:

• ASME A112.19.2 • IGC 252-07 • CSA B45-02 (Supplement No. 1-2004) • ADA Compliant

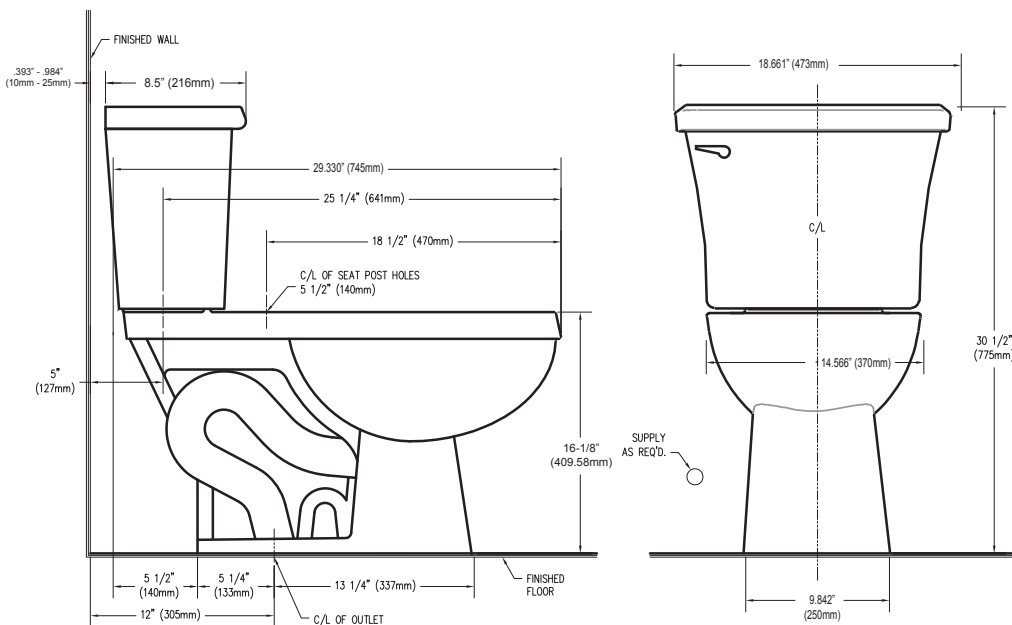
Color	Tank	Bowl
<input type="checkbox"/> White	40-8804	40-8800
<input type="checkbox"/> Biscuit	40-8805	40-8801



Penguin Protection Technology®



Fluidmaster
The Most Popular Name in Toilet Care
Dual Flush System



SIDE CUT-A-WAY SHOWING SECONDARY TRAP HT

NOTES:

THIS TOILET IS DESIGNED TO ROUGH-IN AT A MINIMUM DIMENSION OF 305MM (12") FROM FINISHED WALL TO C/L OF OUTLET. SUPPLY NOT INCLUDED WITH FIXTURE AND MUST BE ORDERED SEPARATELY.

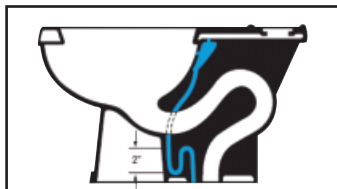
* DIMENSION SHOWN FOR LOCATION OF SUPPLY IS SUGGESTED. FOR ADDITIONAL INFORMATION REFER TO INSTALLATION INSTRUCTIONS SUPPLIED.

**Transolid, Div. • P.O. Box 30 • Warren, OH 44483-0030
(800) 766-2452 • www.transolid.com**





Penguin Protection Technology® Overflow Protection



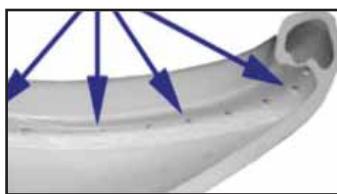
OVERFLOW PROTECTION AND HOW IT WORKS

Transolid toilets with Penguin technology features a toilet design with a secondary drain system that allows the contents to drain through a separate drain line in the event of a clog in the main trap. This systems virtually eliminates toilet overflows.



PRIMARY OVERFLOW

If a blockage occurs and the toilet clogs, water will continue to rise until it reaches the primary overflow holes in the back of the bowl. At this point, the water drains through the secondary system bypassing the main trap and drains directly into the sanitary main.



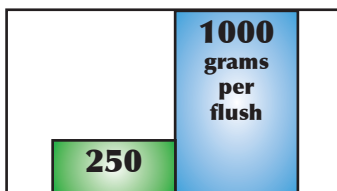
SECONDARY OVERFLOW *The second level of protection*

In the unlikely event that the primary overflow holes are obstructed, the water will continue to rise until it enters the holes under the bowl rim. The water travels through a hidden inlet into the secondary drain system which drains into the sanitary main, once again protecting from an overflow.



CONVENTIONAL INSTALLATION

Simply place the wax ring on the bottom of the bowl then set the bowl as normal. There is no need to re-pipe or replace any of the existing plumbing system. After you have installed the new Transolid toilet relax, knowing that you are protected.



MaP MAXIMUM PERFORMANCE

Transolid toilets perform at 1000 grams per flush. The highest rating of any two-piece toilet. The average amount of human solid waste is equivalent to 250 grams per flush. The Transolid toilet provides 4x this capacity, your assurance of solid performance.



FLUIDMASTER INTEGRITY *The Industries Most Trusted Name*

The most popular name in toilet care with the highest quality performance. Transolid toilets with Fluidmaster tand components provide the highest level of performance providing years of service.

Industry Awards



Industry Approvals





**PATRICK
MODEL 524**
**TWO-PIECE CLOSED - COUPLE, ELONGATED BOWL,
12" ROUGH IN, GRAVITY FEED
ELONGATED TOILET WITH SECONDARY DRAIN SYSTEM
VITREOUS CHINA**

**ELONGATED TOILET WITH SECONDARY DRAIN SYSTEM
MODEL 524 • HET 1.28 GALLON / 4.8 LITER PER FLUSH
WATER SENSE LISTED**

FEATURES:

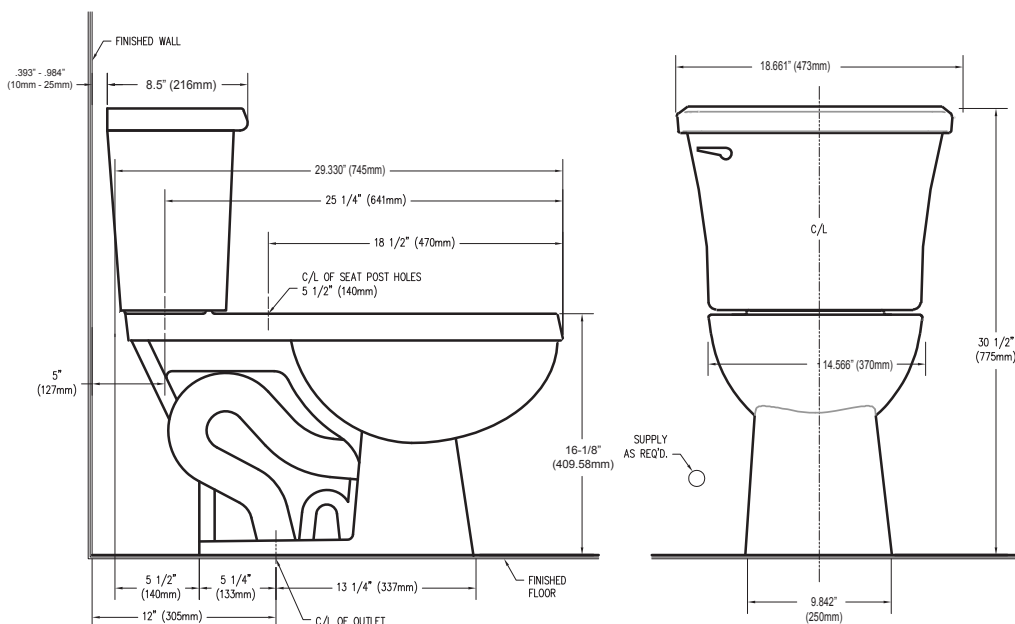
- **Elongated bowl**
- **Vitreous china**
- **12" rough-in**
- **Fluidmaster Siphonic Flush System**
3" flush valve for rapid bowl cleansing
- **Exclusive Penguin Protection Technology:**
Primary & Secondary overflow drain system protects against overflows
- **Comfort ADA height**
New taller bowl design meets ADA codes
- **1000 gram MaP flushing performance**
With a gravity flushing system
- **Left hand trip lever**
- **Fully glazed 2" trapway**

APPLICABLE CODES & STANDARDS:

• ASME A112.19.2 • IGC 252-07 • CSA B45-02 (Supplement No. 1-2004) • ADA Compliant



Color	Tank	Bowl
<input type="checkbox"/> White	40-8806	40-8802
<input type="checkbox"/> Biscuit	40-8807	40-8803



NOTES:

THIS TOILET IS DESIGNED TO ROUGH-IN AT A MINIMUM DIMENSION OF 305MM (12") FROM FINISHED WALL TO C/L OF OUTLET. SUPPLY NOT INCLUDED WITH FIXTURE AND MUST BE ORDERED SEPARATELY.

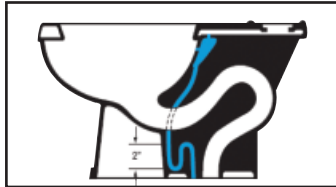
* DIMENSION SHOWN FOR LOCATION OF SUPPLY IS SUGGESTED. FOR ADDITIONAL INFORMATION REFER TO INSTALLATION INSTRUCTIONS SUPPLIED.

**Transolid, Div. • P.O. Box 30 • Warren, OH 44483-0030
(800) 766-2452 • www.transolid.com**





Penguin Protection Technology® Overflow Protection



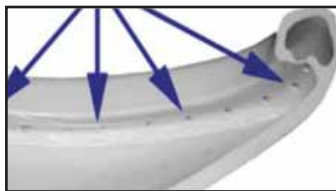
OVERFLOW PROTECTION AND HOW IT WORKS

Transolid toilets with Penguin technology features a toilet design with a secondary drain system that allows the contents to drain through a separate drain line in the event of a clog in the main trap. This systems virtually eliminates toilet overflows.



PRIMARY OVERFLOW

If a blockage occurs and the toilet clogs, water will continue to rise until it reaches the primary overflow holes in the back of the bowl. At this point, the water drains through the secondary system bypassing the main trap and drains directly into the sanitary main.



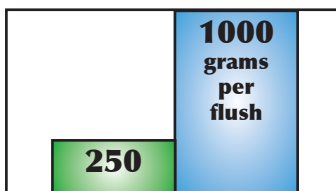
SECONDARY OVERFLOW *The second level of protection*

In the unlikely event that the primary overflow holes are obstructed, the water will continue to rise until it enters the holes under the bowl rim. The water travels through a hidden inlet into the secondary drain system which drains into the sanitary main, once again protecting from an overflow.



CONVENTIONAL INSTALLATION

Simply place the wax ring on the bottom of the bowl then set the bowl as normal. There is no need to re-pipe or replace any of the existing plumbing system. After you have installed the new Transolid toilet relax, knowing that you are protected.



MaP MAXIMUM PERFORMANCE

Transolid toilets perform at 1000 grams per flush. The highest rating of any two-piece toilet. The average amount of human solid waste is equivalent to 250 grams per flush. The Transolid toilet provides 4x this capacity, your assurance of solid performance.



FLUIDMASTER INTEGRITY *The Industries Most Trusted Name*

The most popular name in toilet care with the highest quality performance. Transolid toilets with Fluidmaster tand components provide the highest level of performance providing years of service.

Industry Awards



Industry Approvals





**MANFRED
MODEL 15 FLUSHOMETER BOWL
10" ROUGH IN, GRAVITY FEED
ELONGATED BOWL WITH SECONDARY DRAIN SYSTEM
VITREOUS CHINA**

**ELONGATED BOWL WITH SECONDARY DRAIN SYSTEM
MODEL 015 • 1.6 or 1.28 GALLON / 6.0 or 4.8 LITERS
PER FLUSH UNIVERSAL SYSTEM**

FEATURES:

- Elongated bowl
- Vitreous china
- 10" rough-in
- Exclusive Penguin Protection Technology:
Primary & Secondary overflow drain system protects against overflows
- Comfort ADA height
New taller bowl design meets ADA codes
- Universal Flush System.
1.6 or 1.28gpf / 6.0 or 4.8Lpf; works with either flush valve
- 2-1/4" passageway
- 2" fully glazed trapway

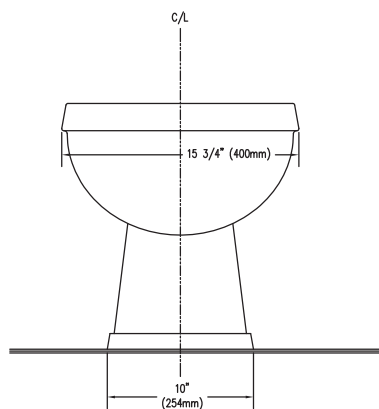
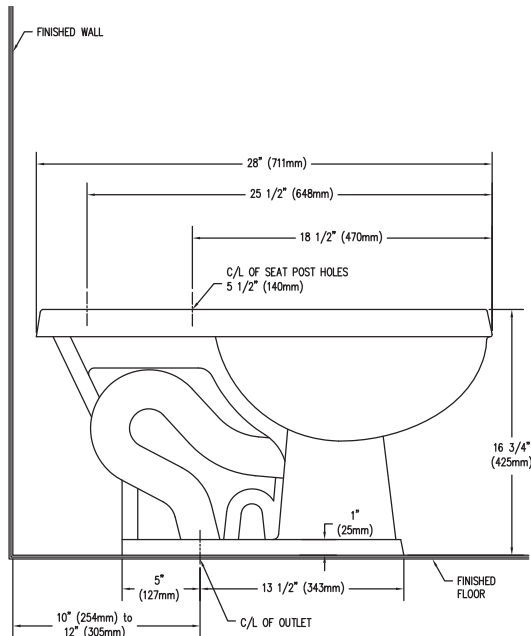
APPLICABLE CODES & STANDARDS:

- ASME A112.19.2 • IGC 252-07 • CSA B45-02
- IAPMO/cUPC • ADA Compliant

Color	Item
<input type="checkbox"/> White	40-8808



 Penguin Protection Technology®



NOTES:

THIS TOILET IS DESIGNED TO ROUGH-IN AT A MINIMUM DIMENSION OF 10" TO 12" (254MM TO 305MM) FROM FINISHED WALL TO C/L OF OUTLET. FLUSHOMETER NOT INCLUDED WITH FIXTURE.

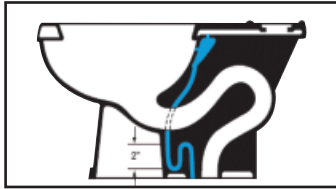
**Transolid, Div. • P.O. Box 30 • Warren, OH 44483-0030
(800) 766-2452 • www.transolid.com**



U.S. AND INTERNATIONAL PATENTS PENDING



Penguin Protection Technology® Overflow Protection



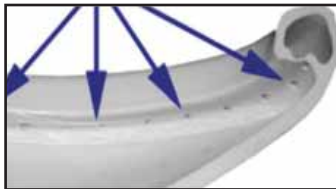
OVERFLOW PROTECTION AND HOW IT WORKS

Transolid toilets with Penguin technology features a toilet design with a secondary drain system that allows the contents to drain through a separate drain line in the event of a clog in the main trap. This systems virtually eliminates toilet overflows.



PRIMARY OVERFLOW

If a blockage occurs and the toilet clogs, water will continue to rise until it reaches the primary overflow holes in the back of the bowl. At this point, the water drains through the secondary system bypassing the main trap and drains directly into the sanitary main.



SECONDARY OVERFLOW *The second level of protection*

In the unlikely event that the primary overflow holes are obstructed, the water will continue to rise until it enters the holes under the bowl rim. The water travels through a hidden inlet into the secondary drain system which drains into the sanitary main, once again protecting from an overflow.



CONVENTIONAL INSTALLATION

Simply place the wax ring on the bottom of the bowl then set the bowl as normal. There is no need to re-pipe or replace any of the existing plumbing system. After you have installed the new Transolid toilet relax, knowing that you are protected.

Industry Awards



Industry Approvals





MADISON
TWO-PIECE CLOSED - COUPLE, ROUND BOWL
12" ROUGH IN, GRAVITY FEED
VITREOUS CHINA

ROUND FRONT TOILET
1.6 GALLON/6.0 LITER FULL FLUSH

FEATURES:

- Round bowl
- Vitreous china
- 12" rough-in
- Left hand trip lever
- Fully glazed 2" trapway
- Available in White or Biscuit colors
- Toilet seat sold separately
- Includes two bolt caps

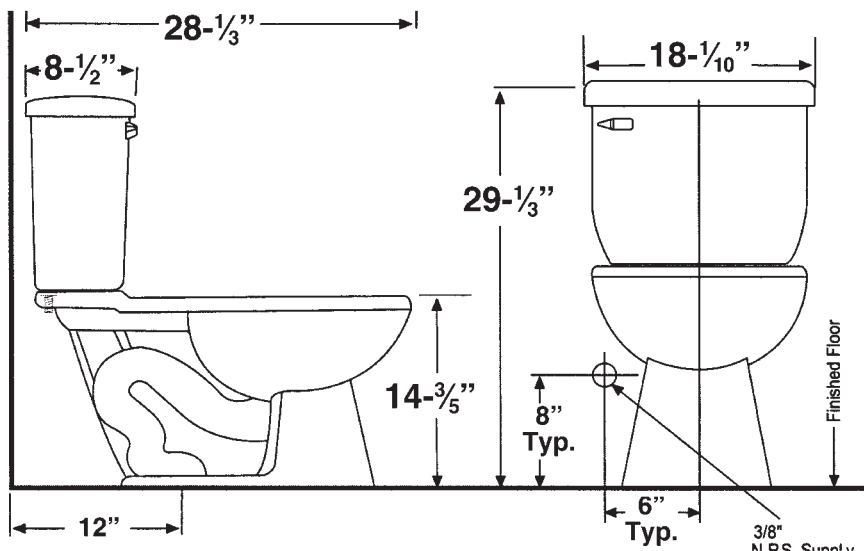
APPLICABLE CODES & STANDARDS:

- ASME A 112.19.2M-1998
- Canadian Uniform Plumbing code 2002



Color	Tank	Bowl
<input type="checkbox"/> White	40-3728	40-3710
<input type="checkbox"/> Biscuit	40-3711	40-3729

Toilet seat sold separately



NOTES:
 THIS TOILET IS DESIGNED TO ROUGH-IN AT A MINIMUM DIMENSION OF 305MM (12") FROM FINISHED WALL TO C/L OF OUTLET. SUPPLY NOT INCLUDED WITH FIXTURE AND MUST BE ORDERED SEPARATELY.

* DIMENSION SHOWN FOR LOCATION OF SUPPLY IS SUGGESTED. FOR ADDITIONAL INFORMATION REFER TO INSTALLATION INSTRUCTIONS SUPPLIED.





MADISON
TWO-PIECE CLOSED - COUPLE, ELONGATED BOWL
12" ROUGH IN, GRAVITY FEED
VITREOUS CHINA

ELONGATED FRONT TOILET
1.6 GALLON/6.0 LITER FULL FLUSH

FEATURES:

- Elongated bowl
- Vitreous china
- 12" rough-in
- Left hand trip lever
- Fully glazed 2" trapway
- Available in White or Biscuit colors
- Toilet seat sold separately
- Includes two bolt caps

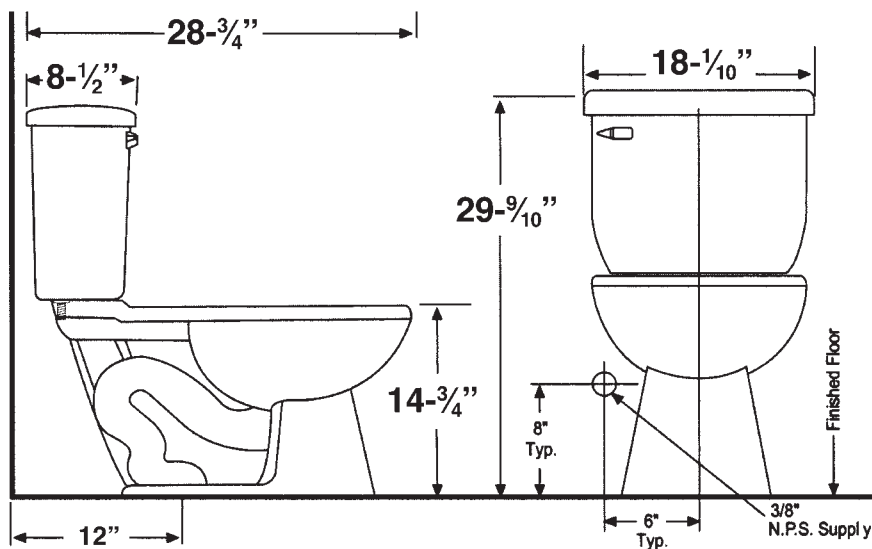
APPLICABLE CODES & STANDARDS:

- ASME A 112.19.2M-1998
- Canadian Uniform Plumbing code 2002



Color	Tank	Bowl
<input type="checkbox"/> White	40-3728	40-3713
<input type="checkbox"/> Biscuit	40-3711	40-3714

Toilet seat sold separately



NOTES:

THIS TOILET IS DESIGNED TO ROUGH-IN AT A MINIMUM DIMENSION OF 305MM (12") FROM FINISHED WALL TO C/L OF OUTLET. SUPPLY NOT INCLUDED WITH FIXTURE AND MUST BE ORDERED SEPARATELY.

* DIMENSION SHOWN FOR LOCATION OF SUPPLY IS SUGGESTED. FOR ADDITIONAL INFORMATION REFER TO INSTALLATION INSTRUCTIONS SUPPLIED.





MADISON ALL-IN-ONE
TWO-PIECE CLOSED - COUPLE, ROUND BOWL
12" ROUGH IN, GRAVITY FEED
VITREOUS CHINA

ALL-IN-ONE ROUND FRONT TOILET
1.6 GALLON/6.0 LITER FULL FLUSH

FEATURES:

- Round bowl
- Vitreous china
- 12" rough-in
- Left hand trip lever
- Fully glazed 2" trapway
- Available in White or Biscuit colors
- All-In-One Toilet Package

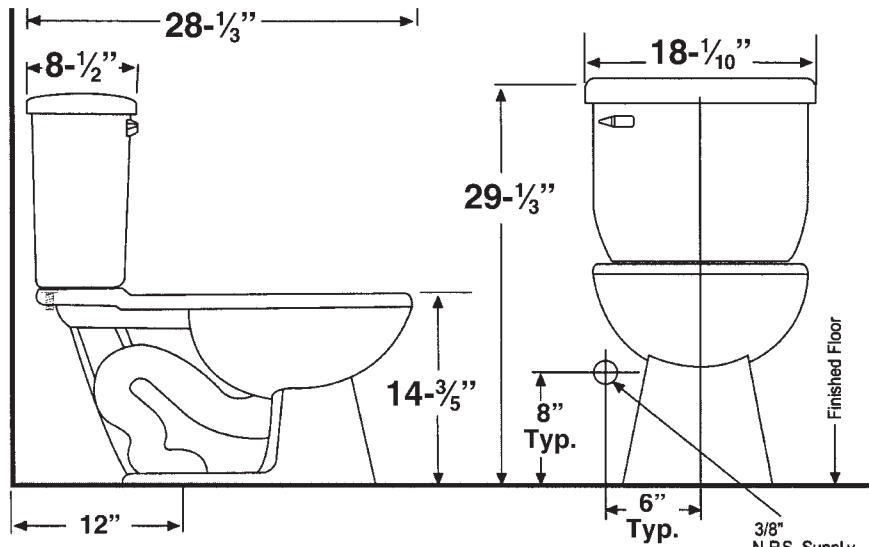
Includes Toilet Tank, Toilet Bowl, Quality Toilet Seat, Wax Seal, Tank & Hold Down Bolts and Bolt Caps



APPLICABLE CODES & STANDARDS:

- ASME A 112.19.2M-1998
- Canadian Uniform Plumbing code 2002

Color	Model
<input type="checkbox"/> White	40-3740
<input type="checkbox"/> Biscuit	40-3741



NOTES:

THIS TOILET IS DESIGNED TO ROUGH-IN AT A MINIMUM DIMENSION OF 305MM (12") FROM FINISHED WALL TO C/L OF OUTLET. SUPPLY NOT INCLUDED WITH FIXTURE AND MUST BE ORDERED SEPARATELY.

* DIMENSION SHOWN FOR LOCATION OF SUPPLY IS SUGGESTED. FOR ADDITIONAL INFORMATION REFER TO INSTALLATION INSTRUCTIONS SUPPLIED.

Transolid, Div. • P.O. Box 30 • Warren, OH 44483-0030
(800) 766-2452 • www.transolid.com





MADISON ALL-IN-ONE
TWO-PIECE CLOSED - COUPLE, ELONGATED BOWL
12" ROUGH IN, GRAVITY FEED
VITREOUS CHINA

ALL-IN-ONE ELONGATED FRONT TOILET
1.6 GALLON/6.0 LITER FULL FLUSH

FEATURES:

- Elongated bowl
- Vitreous china
- 12" rough-in
- Left hand trip lever
- Fully glazed 2" trapway
- Available in White or Biscuit colors
- Toilet seat sold separately
- Includes two bolt caps
- All-In-One Toilet Package

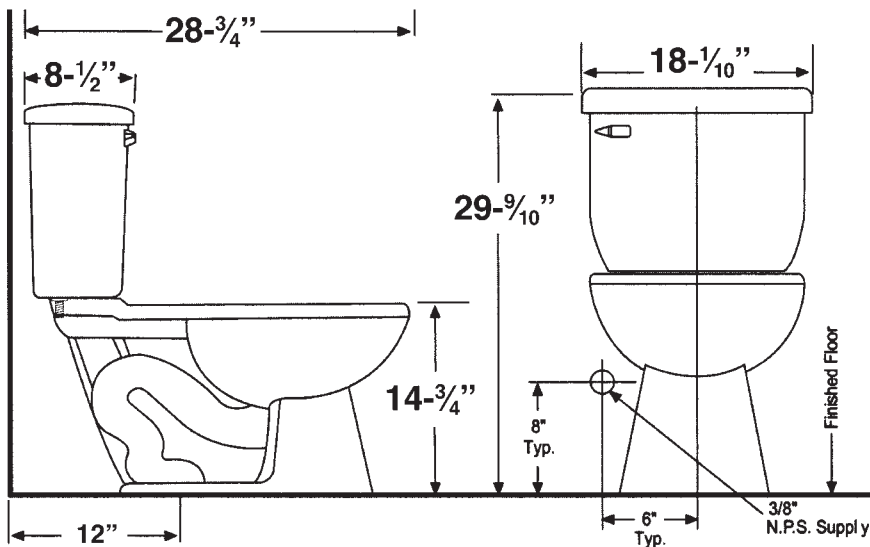
Includes Toilet Tank, Toilet Bowl, Quality Toilet Seat, Wax Seal, Tank & Hold Down Bolts and Bolt Caps

APPLICABLE CODES & STANDARDS:

- ASME A 112.19.2M-1998
- Canadian Uniform Plumbing code 2002



Color	Model
<input type="checkbox"/> White	40-3743
<input type="checkbox"/> Biscuit	40-3744



NOTES:

THIS TOILET IS DESIGNED TO ROUGH-IN AT A MINIMUM DIMENSION OF 305MM (12") FROM FINISHED WALL TO C/L OF OUTLET. SUPPLY NOT INCLUDED WITH FIXTURE AND MUST BE ORDERED SEPARATELY.

* DIMENSION SHOWN FOR LOCATION OF SUPPLY IS SUGGESTED. FOR ADDITIONAL INFORMATION REFER TO INSTALLATION INSTRUCTIONS SUPPLIED.





MCKINLEY
HIGH-EFFICIENCY, COMFORT HEIGHT
TWO-PIECE CLOSED - COUPLE, ELONGATED BOWL
12" ROUGH IN, GRAVITY FEED
VITREOUS CHINA

HET-WATER SENSE LISTED, COMFORT HEIGHT
ELONGATED FRONT TOILET
1.28 GALLON/4.8 LITER PER FLUSH

FEATURES:

- Elongated bowl
- Vitreous china
- 12" rough-in
- Left hand trip lever
- Fully glazed 2" trapway
- Comfort ADA height

New taller bowl design meets ADA codes

- Available in White or Biscuit colors
- Toilet seat sold separately
- Includes two bolt caps

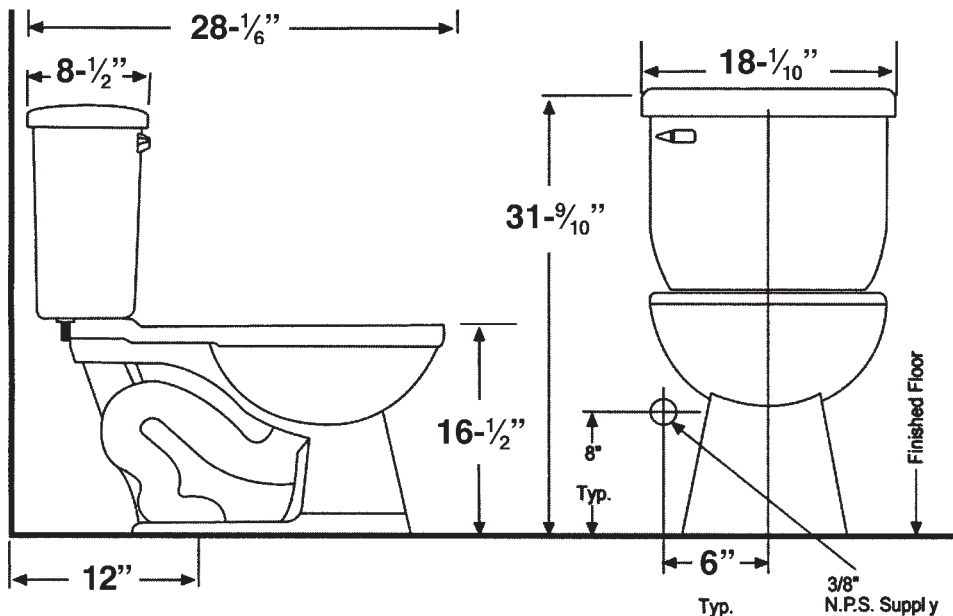
APPLICABLE CODES & STANDARDS:

- ASME A 112.19.2M-1998
- Canadian Uniform Plumbing code 2002



Color	Tank	Bowl
<input type="checkbox"/> White	40-3731	40-3716
<input type="checkbox"/> Biscuit	40-3732	40-3717

Toilet seat sold separately



NOTES:

THIS TOILET IS DESIGNED TO ROUGH-IN AT A MINIMUM DIMENSION OF 305MM (12") FROM FINISHED WALL TO C/L OF OUTLET. SUPPLY NOT INCLUDED WITH FIXTURE AND MUST BE ORDERED SEPARATELY.

* DIMENSION SHOWN FOR LOCATION OF SUPPLY IS SUGGESTED. FOR ADDITIONAL INFORMATION REFER TO INSTALLATION INSTRUCTIONS SUPPLIED.

Transolid, Div. • P.O. Box 30 • Warren, OH 44483-0030
(800) 766-2452 • www.transolid.com





MCKINLEY ALL-IN-ONE
HIGH-EFFICIENCY, COMFORT HEIGHT
TWO-PIECE CLOSED - COUPLE, ELONGATED BOWL
12" ROUGH IN, GRAVITY FEED
VITREOUS CHINA

HET-WATER SENSE LISTED, COMFORT HEIGHT
ALL-IN-ONE ELONGATED FRONT TOILET
1.28 GALLON/4.8 LITER PER FLUSH

FEATURES:

- Elongated bowl
- Vitreous china
- 12" rough-in
- Left hand trip lever
- Fully glazed 2" trapway
- Comfort ADA height

New taller bowl design meets ADA codes

- Available in White or Biscuit colors
- All-In-One Toilet Package

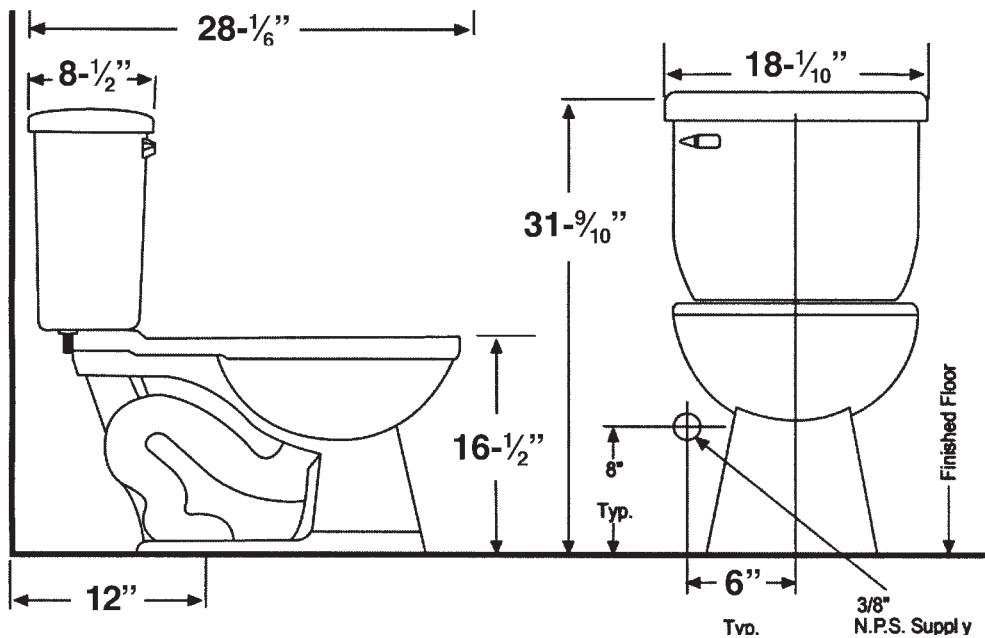
Includes Toilet Tank, Toilet Bowl, Quality Toilet Seat, Wax Seal, Tank & Hold Down Bolts and Bolt Caps



APPLICABLE CODES & STANDARDS:

- ASME A 112.19.2M-1998
- Canadian Uniform Plumbing code 2002

Color	Model
<input type="checkbox"/> White	40-3746
<input type="checkbox"/> Biscuit	40-3747



NOTES:

THIS TOILET IS DESIGNED TO ROUGH-IN AT A MINIMUM DIMENSION OF 305MM (12") FROM FINISHED WALL TO C/L OF OUTLET. SUPPLY NOT INCLUDED WITH FIXTURE AND MUST BE ORDERED SEPARATELY.

* DIMENSION SHOWN FOR LOCATION OF SUPPLY IS SUGGESTED. FOR ADDITIONAL INFORMATION REFER TO INSTALLATION INSTRUCTIONS SUPPLIED.

Transolid, Div. • P.O. Box 30 • Warren, OH 44483-0030
(800) 766-2452 • www.transolid.com





HARRISON HET
HIGH-EFFICIENCY, COMFORT HEIGHT
TWO-PIECE CLOSED - COUPLE, ROUND BOWL
1000 GRAM FLUSH, 12" ROUGH IN, GRAVITY FEED
VITREOUS CHINA

HET-WATER SENSE LISTED, COMFORT HEIGHT
1000 GRAM FLUSH ROUND FRONT TOILET
1.28 GALLON/4.8 LITER PER FLUSH

FEATURES:

- Round bowl
- Vitreous china
- 12" rough-in
- Left hand trip lever
- Fully glazed 2 1/8" trapway
- Comfort ADA height
 - New taller bowl design meets ADA codes*
- **NEW 3" wide flush valve**
 - 3" diameter flush valve maximizes flow rate and water pressure to bowl*
- **1000 gram MaP flushing performance**
 - With a gravity flushing system*

- Available in White or Biscuit colors
- Includes two bolt caps

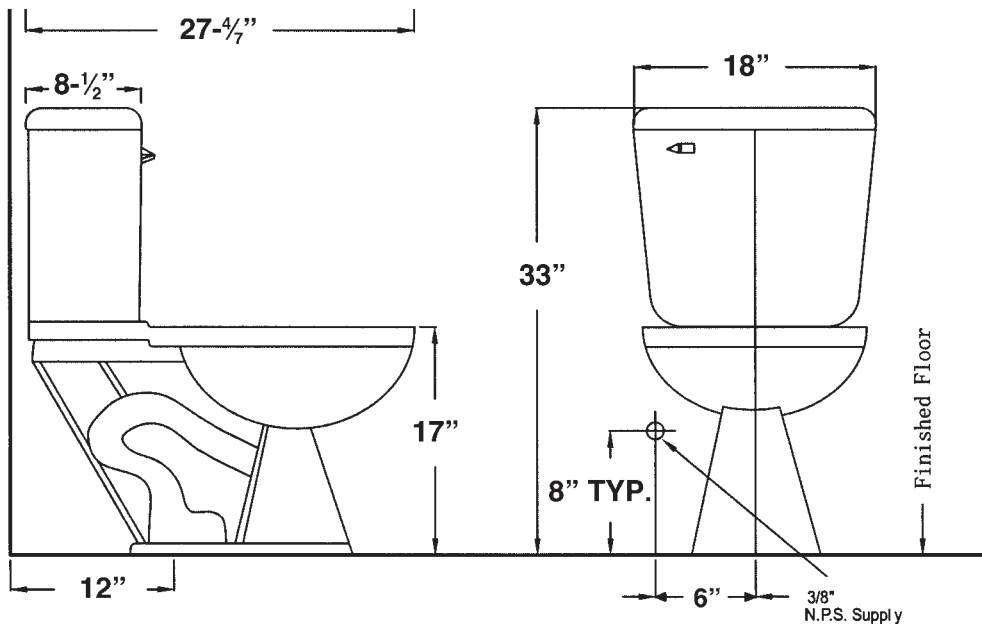
APPLICABLE CODES & STANDARDS:

- ASME A 112.19.2M-1998
- Canadian Uniform Plumbing code 2002



	Color	Tank	Bowl
<input type="checkbox"/>	White	40-3734	40-3719
<input type="checkbox"/>	Biscuit	40-3735	40-3720

Toilet seat sold separately



NOTES:
 THIS TOILET IS DESIGNED TO ROUGH-IN AT A MINIMUM DIMENSION OF 305MM (12") FROM FINISHED WALL TO C/L OF OUTLET. SUPPLY NOT INCLUDED WITH FIXTURE AND MUST BE ORDERED SEPARATELY.

* DIMENSION SHOWN FOR LOCATION OF SUPPLY IS SUGGESTED. FOR ADDITIONAL INFORMATION REFER TO INSTALLATION INSTRUCTIONS SUPPLIED.

Transolid, Div. • P.O. Box 30 • Warren, OH 44483-0030
(800) 766-2452 • www.transolid.com





HARRISON HET
HIGH-EFFICIENCY, COMFORT HEIGHT
TWO-PIECE CLOSED - COUPLE, ELONGATED BOWL
1000 GRAM FLUSH, 12" ROUGH IN, GRAVITY FEED
VITREOUS CHINA

HET-WATER SENSE LISTED, COMFORT HEIGHT
1000 GRAM FLUSH ELONGATED FRONT TOILET
1.28 GALLON/4.8 LITER PER FLUSH

FEATURES:

- Elongated bowl
- Vitreous china
- 12" rough-in
- Left hand trip lever
- Fully glazed 2 1/8" trapway
- Comfort ADA height
- *New taller bowl design meets ADA codes*
- **NEW 3" wide flush valve**
- *3" diameter flush valve maximizes flow rate and water pressure to bowl*
- **1000 gram MaP flushing performance**
- *With a gravity flushing system*

- Available in White or Biscuit colors
- Includes two bolt caps

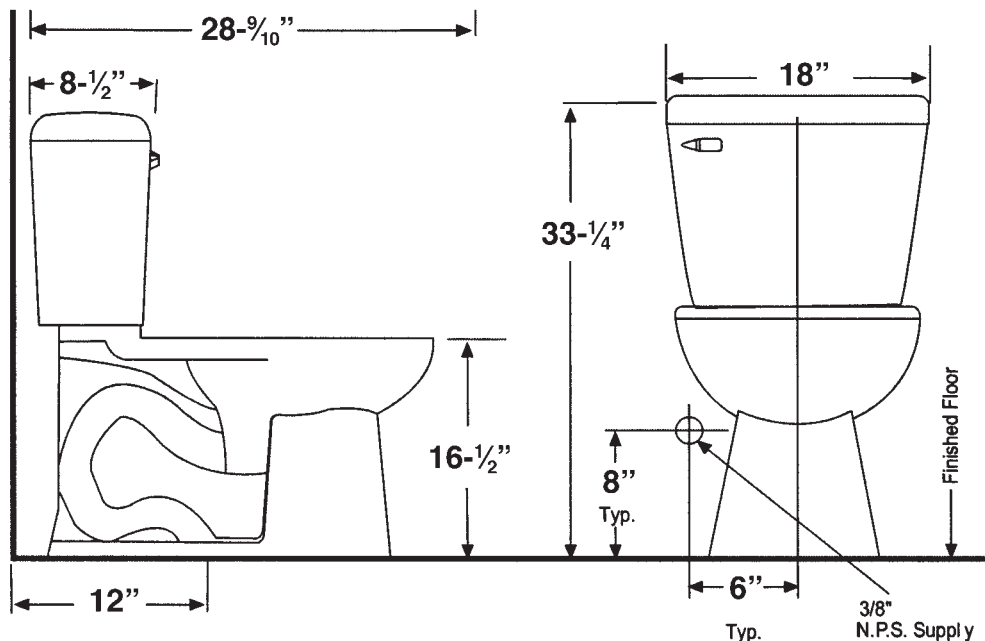
APPLICABLE CODES & STANDARDS:

- ASME A 112.19.2M-1998
- Canadian Uniform Plumbing code 2002



	Color	Tank	Bowl
<input type="checkbox"/>	White	40-3734	40-3722
<input type="checkbox"/>	Biscuit	40-3735	40-3723

Toilet seat sold separately



NOTES:
 THIS TOILET IS DESIGNED TO ROUGH-IN AT A MINIMUM DIMENSION OF 305MM (12") FROM FINISHED WALL TO C/L OF OUTLET. SUPPLY NOT INCLUDED WITH FIXTURE AND MUST BE ORDERED SEPARATELY.

* DIMENSION SHOWN FOR LOCATION OF SUPPLY IS SUGGESTED. FOR ADDITIONAL INFORMATION REFER TO INSTALLATION INSTRUCTIONS SUPPLIED.

Transolid, Div. • P.O. Box 30 • Warren, OH 44483-0030
(800) 766-2452 • www.transolid.com





MONROE
TWO-PIECE CLOSED - COUPLE, ELONGATED BOWL
12" ROUGH IN, GRAVITY FEED
VITREOUS CHINA

DESIGNER STYLE ELONGATED FRONT TOILET
1.6 GALLON/6.0 LITER FULL FLUSH

FEATURES:

- Elongated bowl
- Vitreous china
- 12" rough-in
- Left hand trip lever
- Designer styling
- Fully glazed 2" trapway
- Available in White or Biscuit colors
- Includes two bolt caps

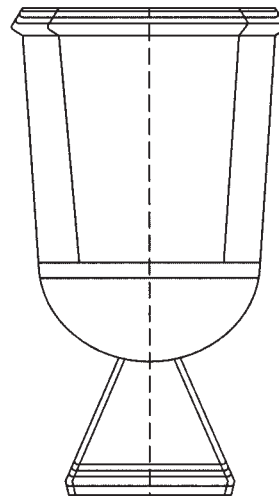
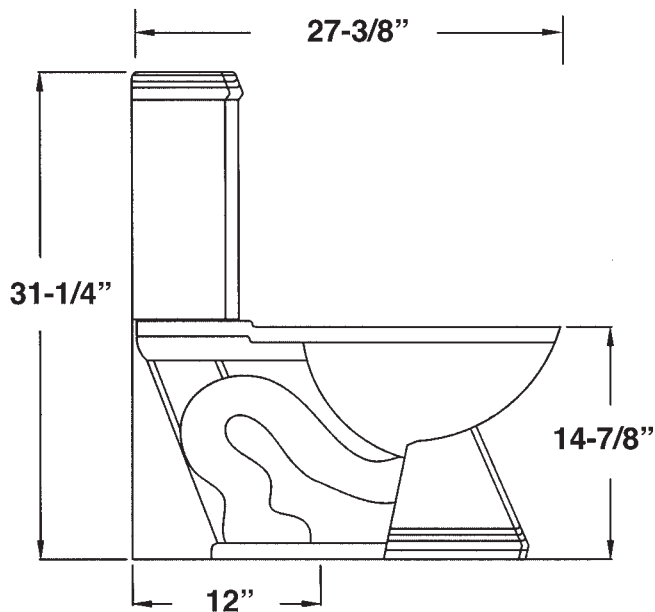
APPLICABLE CODES & STANDARDS:

- ASME A 112.19.2M-1998
- Canadian Uniform Plumbing code 2002



	Color	Tank	Bowl
<input type="checkbox"/>	White	40-3737	40-3725
<input type="checkbox"/>	Biscuit	40-3738	40-3726

Toilet seat sold separately



NOTES:

THIS TOILET IS DESIGNED TO ROUGH-IN AT A MINIMUM DIMENSION OF 305MM (12") FROM FINISHED WALL TO C/L OF OUTLET. SUPPLY NOT INCLUDED WITH FIXTURE AND MUST BE ORDERED SEPARATELY.

* DIMENSION SHOWN FOR LOCATION OF SUPPLY IS SUGGESTED. FOR ADDITIONAL INFORMATION REFER TO INSTALLATION INSTRUCTIONS SUPPLIED.

Transolid, Div. • P.O. Box 30 • Warren, OH 44483-0030
(800) 766-2452 • www.transolid.com





AVALON
TWO-PIECE CLOSED - COUPLE, ELONGATED BOWL
12" ROUGH IN, GRAVITY FEED
VITREOUS CHINA

ELONGATED FRONT TOILET
1.6 GALLON/6.0 LITER FULL FLUSH

FEATURES:

- Elongated bowl
- Vitreous china
- 12" rough-in
- Left hand trip lever
- Comfort ADA height

New taller bowl design meets ADA codes

- Fully glazed 2" trapway
- Available in White only
- Includes two bolt caps

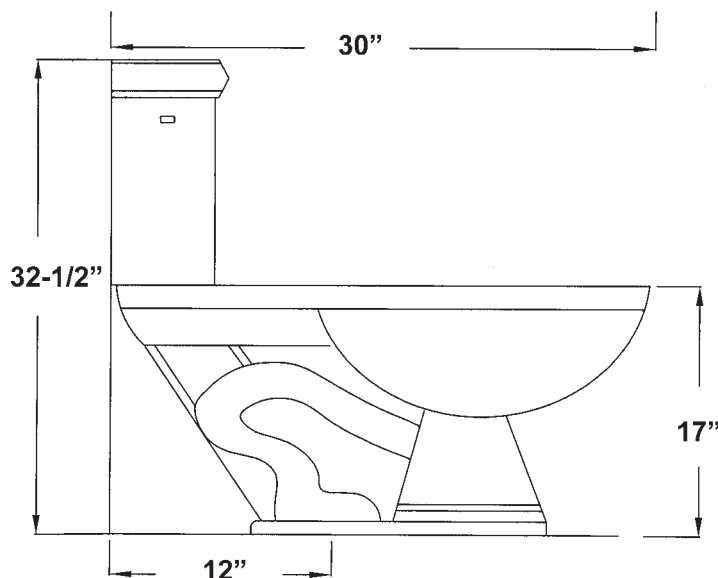
APPLICABLE CODES & STANDARDS:

- ASME A 112.19.2M-1998
- Canadian Uniform Plumbing code 2002



Color	Tank	Bowl
<input type="checkbox"/> White	40-3736	40-3709

Toilet seat sold separately



NOTES:

THIS TOILET IS DESIGNED TO ROUGH-IN AT A MINIMUM DIMENSION OF 305MM (12") FROM FINISHED WALL TO C/L OF OUTLET. SUPPLY NOT INCLUDED WITH FIXTURE AND MUST BE ORDERED SEPARATELY.

* DIMENSION SHOWN FOR LOCATION OF SUPPLY IS SUGGESTED. FOR ADDITIONAL INFORMATION REFER TO INSTALLATION INSTRUCTIONS SUPPLIED.





**JACKSON DUAL FLUSH
COMFORT HEIGHT, ONE-PIECE ELONGATED TOILET
12" ROUGH IN, GRAVITY FEED
VITREOUS CHINA**

**DUAL FLUSH, COMFORT HEIGHT
ONE-PIECE ELONGATED FRONT TOILET
1.6 GALLON/6.0 LITER PER FLUSH**

FEATURES:

- Elongated bowl
- Vitreous china
- 12" rough-in
- Comfort ADA height

New taller bowl design meets ADA codes

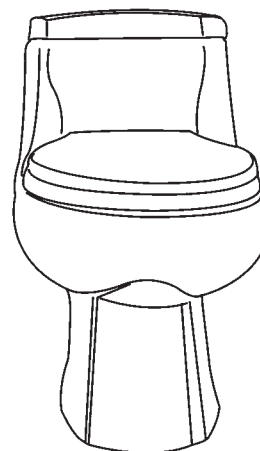
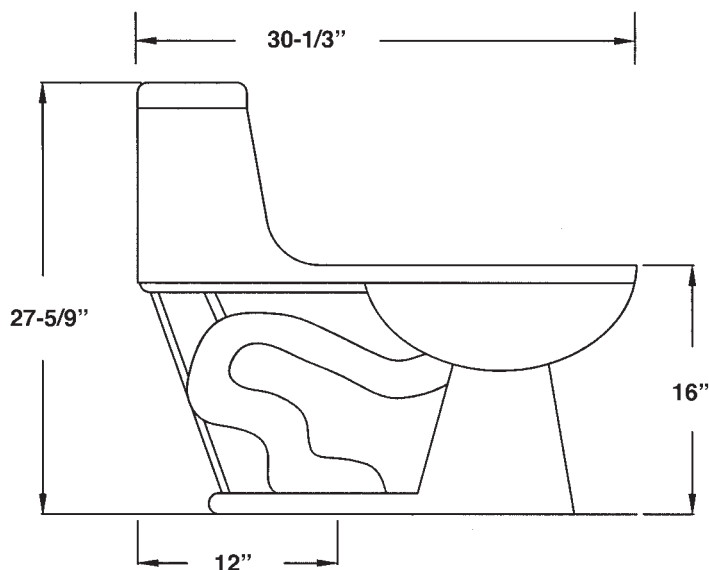
- Fully glazed 2" trapway
- Available in White or Biscuit colors
- Includes two bolt caps
- Includes matching toilet seat

APPLICABLE CODES & STANDARDS:

- ASME A 112.19.2M-1998
- Canadian Uniform Plumbing code 2002



Color	Model
<input type="checkbox"/> White	40-3749
<input type="checkbox"/> Biscuit	40-3750



NOTES:

THIS TOILET IS DESIGNED TO ROUGH-IN AT A MINIMUM DIMENSION OF 305MM (12") FROM FINISHED WALL TO C/L OF OUTLET. SUPPLY NOT INCLUDED WITH FIXTURE AND MUST BE ORDERED SEPARATELY.

* DIMENSION SHOWN FOR LOCATION OF SUPPLY IS SUGGESTED. FOR ADDITIONAL INFORMATION REFER TO INSTALLATION INSTRUCTIONS SUPPLIED.

**Transolid, Div. • P.O. Box 30 • Warren, OH 44483-0030
(800) 766-2452 • www.transolid.com**

